



Access Instructions for United Stationers' ECDB (eCommerce Database) 2.0

Table of Contents

General Information	3
Overview	3
General Information	3
SFTP Clients	3
Support.....	3
WinSCP	4
Overview	4
Installation	4
Setup	5
WinSCP Login	7
Additional Information.....	9
SecureFX	10
Overview	10
Installation	10
Setup	11
SecureFX Login.....	12
Additional Information.....	13

General Information

Overview

The information provided in this document supplies the reader with a description and all the necessary technical information in order to connect, receive data and disconnect with United Stationers' private mailbox facility.

General Information

The actual data movement from United Stationers is accomplished with SFTP (**Secure File Transfer Protocol**), using an encrypted SSH connection. The customer connects to United's FTP mailbox system and then executes a short series of SFTP commands or utilizes an SFTP client to download the ECDB 2.0 data. For technical information on ECDB 2.0 please review the 'Technical Documentation'.

SFTP Clients

United recommends the following SFTP clients, which have been tested and verified to work with United's FTP mailbox system. Any FTP client that supports SSH can also be used.

- WinSCP – Free (<http://winscp.net/eng/index.php>)
- SecureFX – Purchase (<http://www.vandyke.com/products/securefx/>)

Support

For any questions and support, please contact United's Customer Technical Support at 1-800-733-5555 or TechnicalSupport@ussco.com

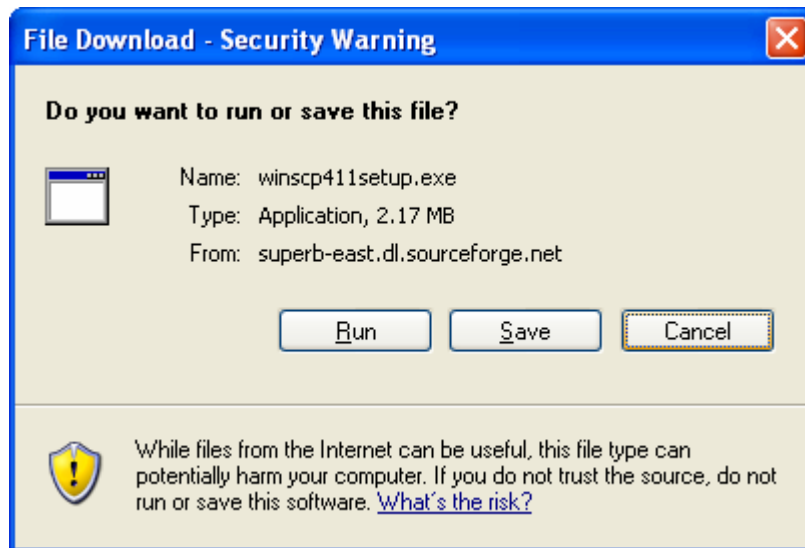
WinSCP

Overview

WinSCP is an open source free SFTP client and FTP client for Windows. Legacy SCP protocol is also supported. Its main function is safe copying of files between a local and a remote computer. Batch file scripting and command-line interface is also available.

Installation

WinSCP can be installed from <http://winscp.net/eng/download.php>. Select the 'Installation package' from one of the WinSCP versions. You will be prompted with the following:

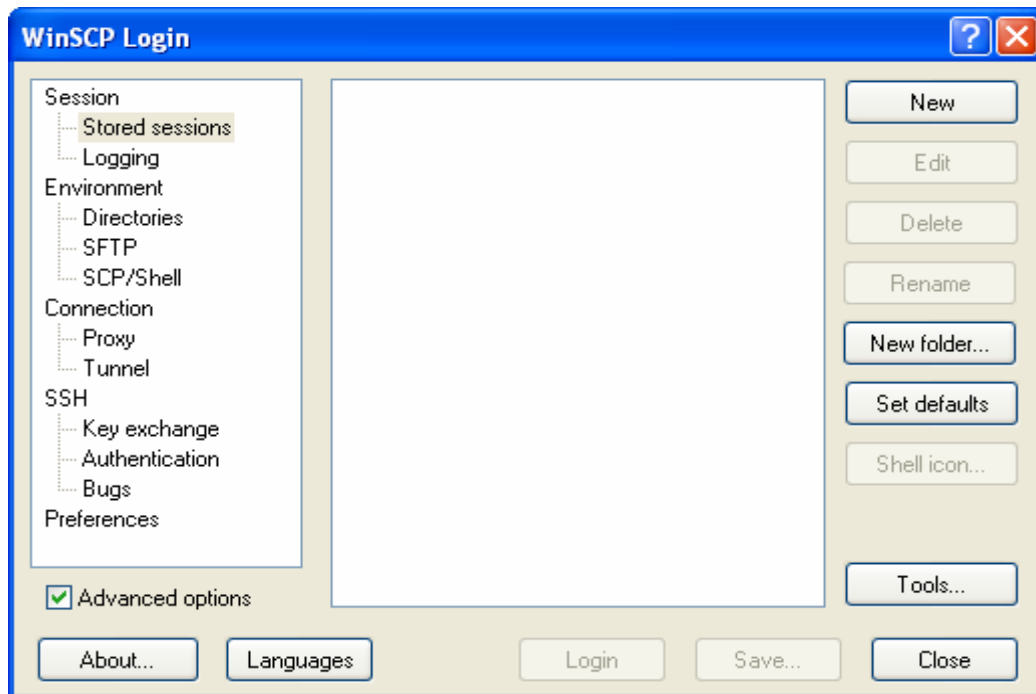


Select 'Run' and use all the defaults to install WinSCP onto your computer.

WinSCP

Setup

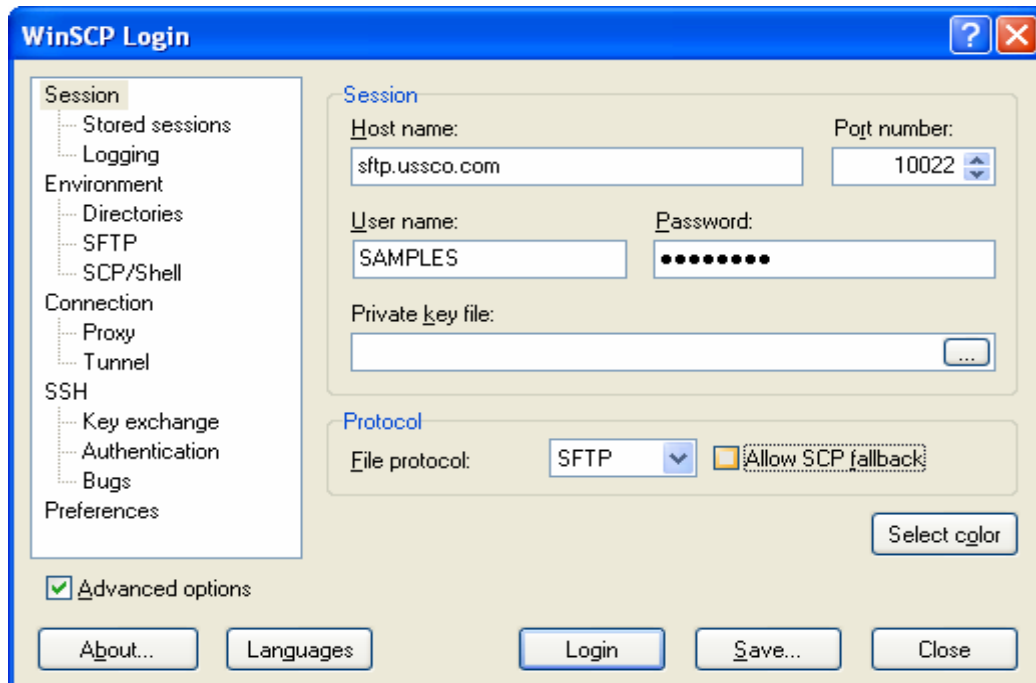
Start the WinSCP application by clicking on the WinSCP icon on your desktop.



The WinSCP Login screen will display. From here you will setup your connection information to access your United mailbox. Select 'New'.

WinSCP

Setup (Continued)

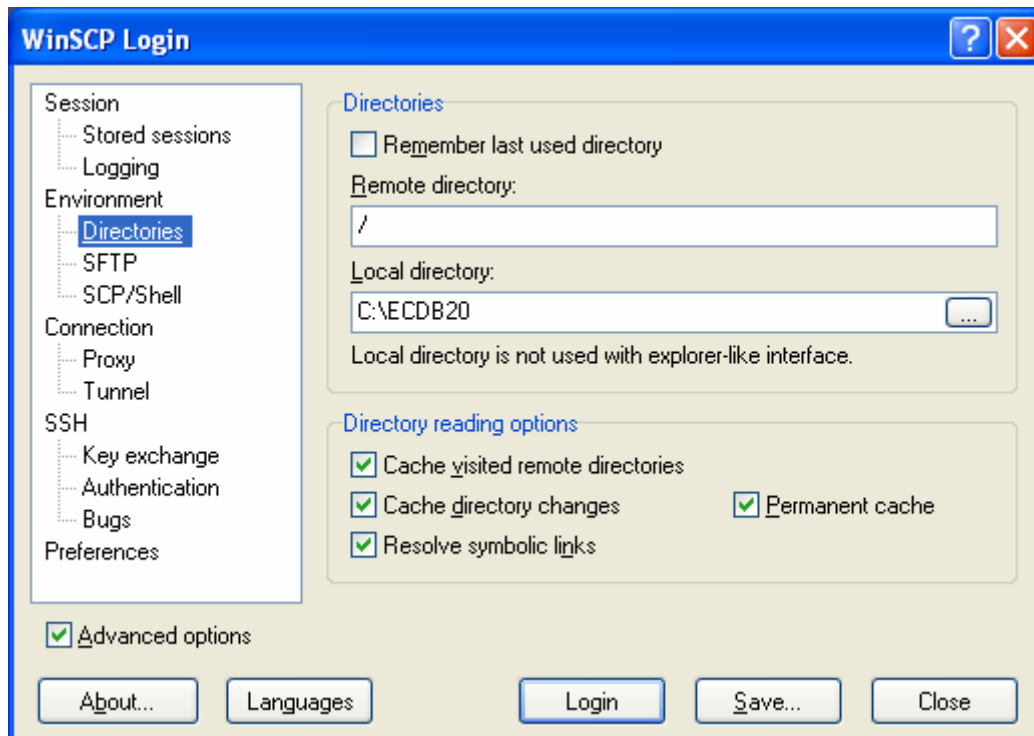


- Host name:** sftp.ussco.com (production)
Stage-sftp.ussco.com (test)
- Port number:** 10022
- User name:** Case sensitive, your United supplied mailbox ID
- Password:** Case sensitive, your United supplied mailbox password
- Private key file:** Blank
- Protocol:** SFTP, uncheck 'Allow SCP fallback'

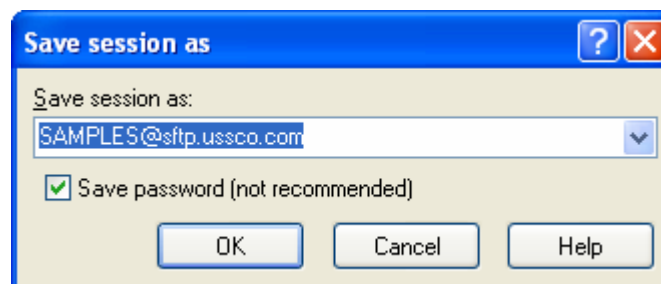
WinSCP

Setup (Continued)

To set the default local and remote directories, select 'Directories' under the 'Environment' group. To default to the ECDB 2.0 folders every time WinSCP is started, enter a '/' in the 'Remote directory' field. You can also select the default local directory in the 'Local directory' field.



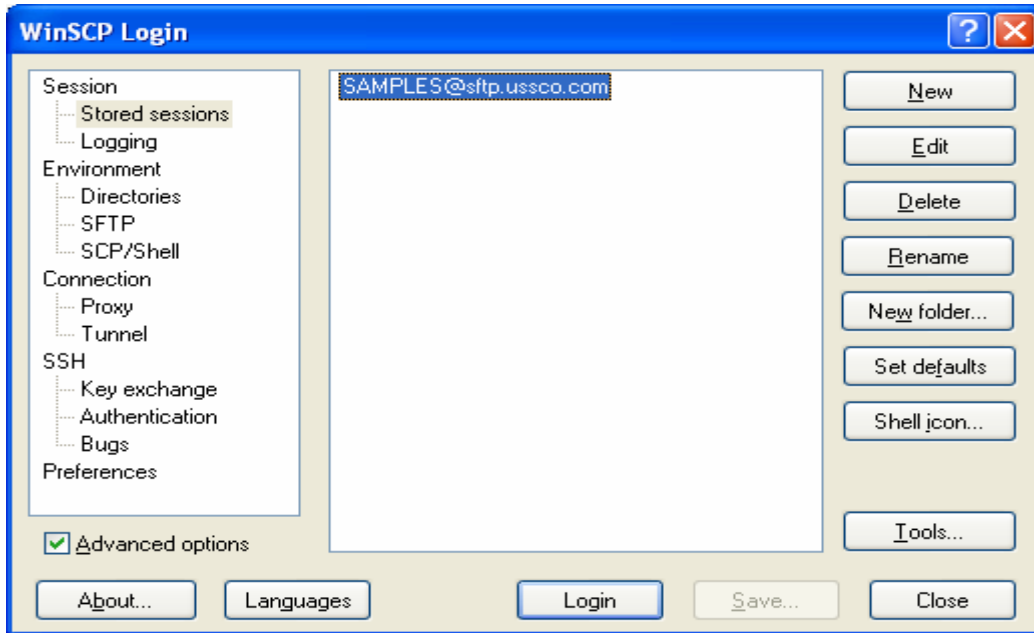
Select 'Save' and check the 'Save password (not recommended)' check box.



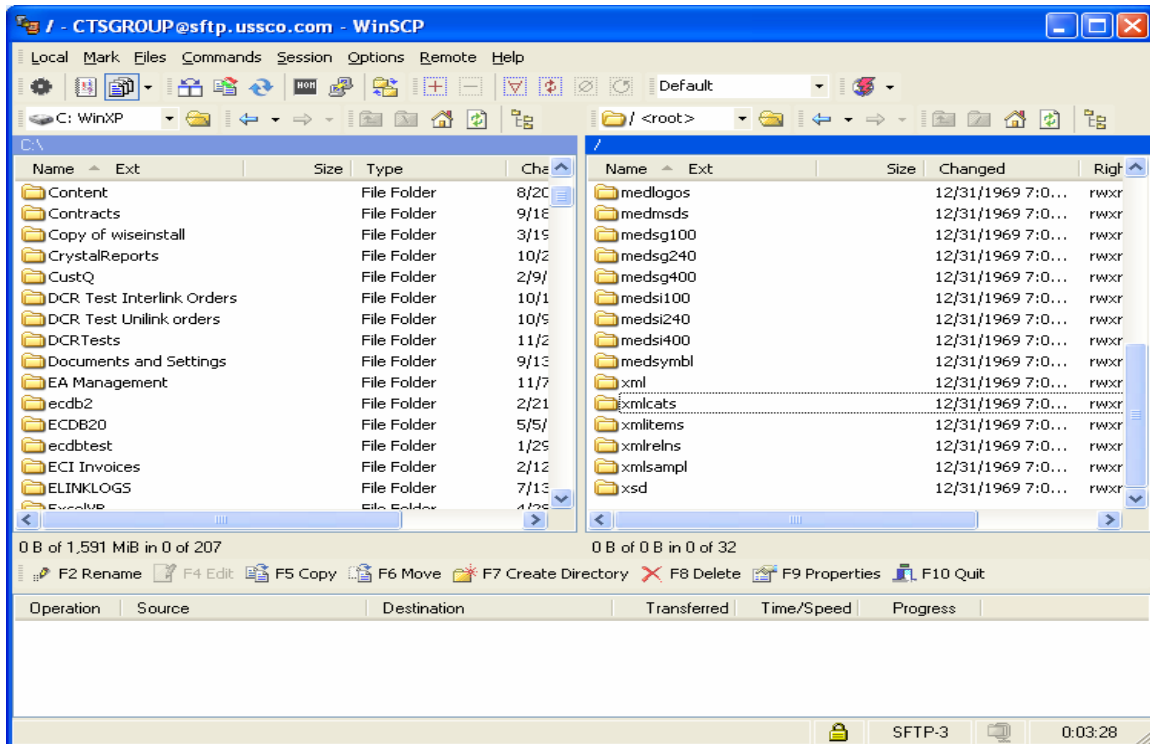
Selecting OK will bring you back to the WinSCP Login screen.

WinSCP

WinSCP Login



From the WinSCP Login screen, select a session to login into and select 'Login'. Upon a successful login the main WinSCP screen will display.

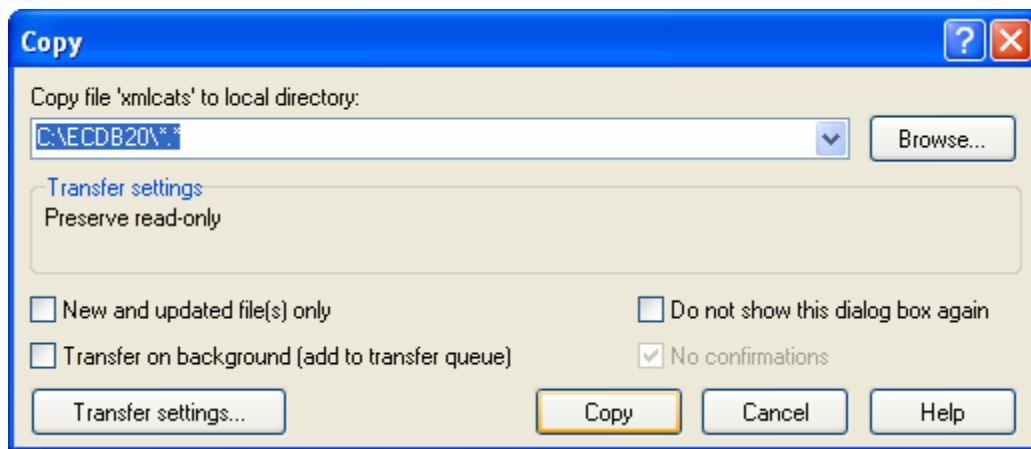


WinSCP

WinSCP Login (Continued)

The default mailbox directory will be your mailbox, to view the ECDB folders you must go to the root of the mailbox by clicking on the root folder icon (📁).

From here you can drag and drop complete ECDB folders or individual ECDB files onto you PC. The right side of the display contains the listing of the remote mailbox and ECDB folders. The left side of the display contains the local directory. When drag and drop process is initiated the following will be displayed



This allows you to change the local (destination) directory. To initiate the download, click on the 'Copy' button.

Additional Information

For additional information on WinSCP, the following link contains the WinSCP documentation: <http://winscp.net/eng/docs/start>.

WinSCP also allows for scripting, for more information on scripting WinSCP visit <http://winscp.net/eng/docs/scripting>

For information on running WinSCP from the Command Line visit <http://winscp.net/eng/docs/commandline>.

SecureFX

Overview

SecureFX® lets you choose between SFTP or FTP over SSL (TLS) for secure transfers, or standard FTP for nonsecure transfers. It has an easy to use, Explorer-like interface with full support for drag-and-drop file transfers to and from the desktop and other applications. At the same time, SecureFX provides you with the power to automate secure file transfers, synchronize local and remote files, and perform server-to-server transfers.

To review the features of SecureFX:

<http://www.vandyke.com/products/securefx/features.html>

Installation

To download and install an evaluation copy or to purchase SecureFX:

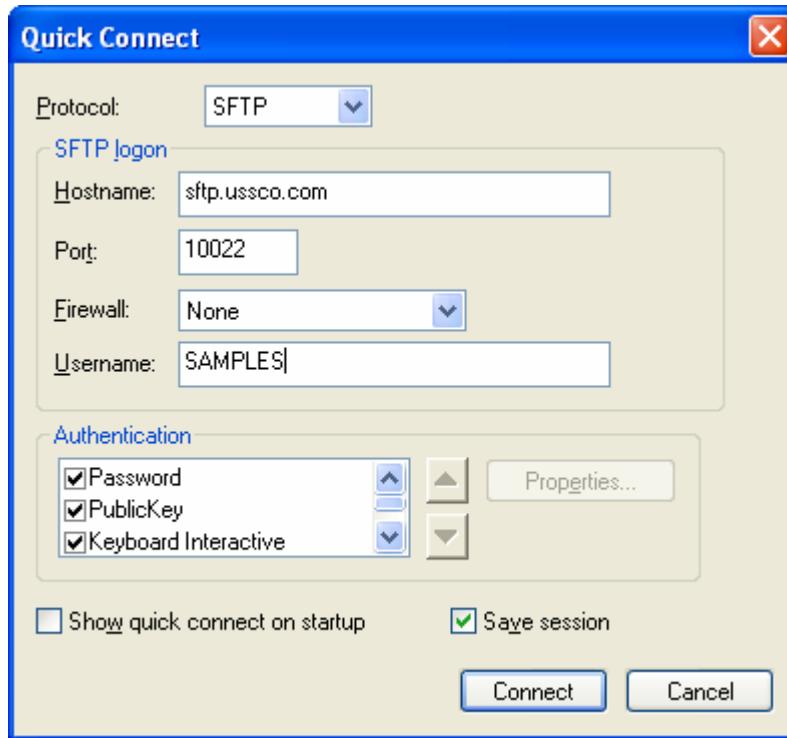
<http://www.vandyke.com/download/securefx/index.html>

Follow the instructions for the installation of SecureFX.

SecureFX

Setup

Select the Quick Connect icon 



Quick Connect

Protocol: SFTP

SFTP logon

Hostname: sftp.ussco.com

Port: 10022

Firewall: None

Username: SAMPLES

Authentication

Password

PublicKey

Keyboard Interactive

Show quick connect on startup

Save session

Connect Cancel

Protocol: SFTP

Hostname: sftp.ussco.com

Port: 10022

Firewall: None


Username: Your United mailbox name

Save session: Checked

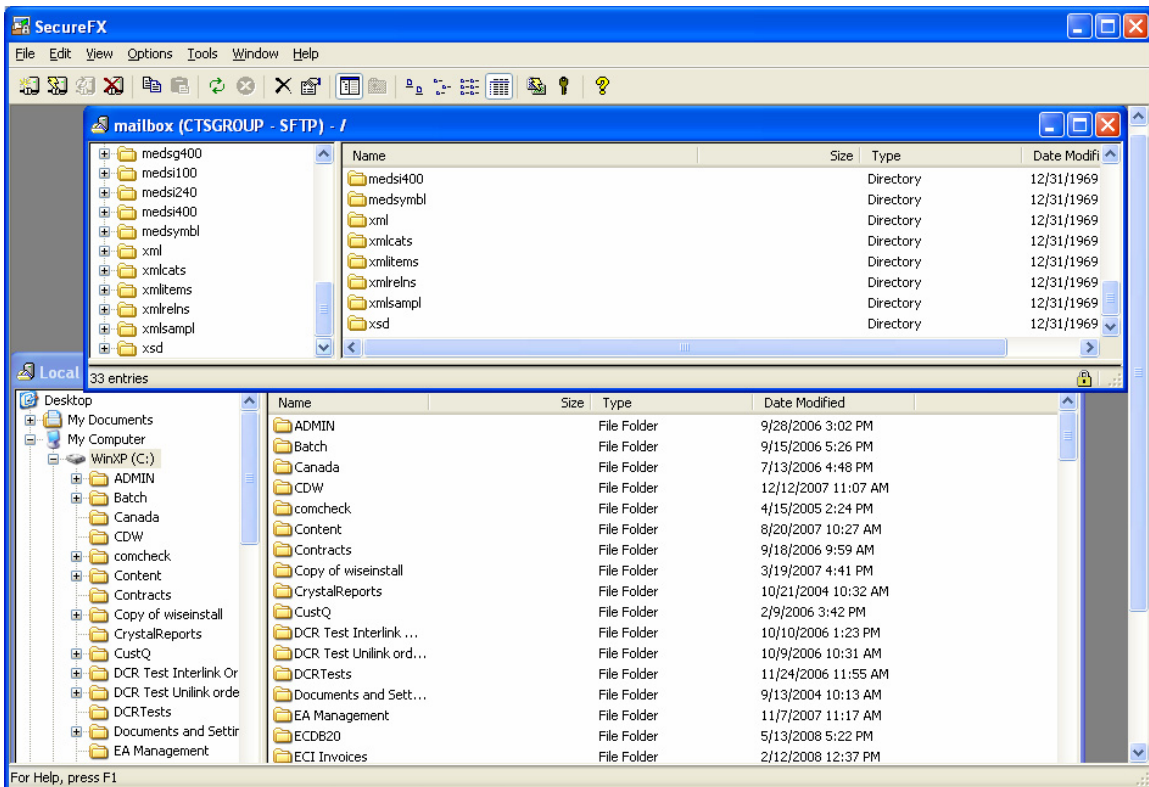
Selecting 'Connect' will connect you to United's FTP mailbox, but prior to a successful connection you will be prompted to enter your password for your United mailbox.

SecureFX

SecureFX Login

After you have successfully setup a 'Quick Connect' in SecureFX, you can access it by selecting the 'Connect' icon . Select the 'Connect' icon will display all the FTP connections you have created, select the connection for United's FTP mailbox. You will be prompted to enter your United mailbox password.

Upon a successful login you will be in you mailbox directory. To access the ECDB 2.0 data click on the '/', bringing you to the root directory of your mailbox and the ECDB 2.0 folders.



SecureFX

Additional Information

To automate file downloads using SecureFX:

<http://www.vandyke.com/support/tips/schedsfxcl.html>

Setting the initial directory in SecureFX:

<http://www.vandyke.com/support/tips/nl062004.html>

Using VBScript for file transfers with SecureFX:

<http://www.vandyke.com/support/tips/sfxcldragdrop.html>

For information on Command Line in SecureFX:

http://www.vandyke.com/support/securefx/transfer_automation.html

SecureFX FAQ:

<http://www.vandyke.com/products/securefx/faq/index.php>